

**Actual Size:** 57.1" W x 30.7" L x 32.1" H  
**Shipping Size:** 60.2" W x 33.9" L x 41.3" H  
**Shipping Weight:** 276 lbs.  
**Net Weight:** 209 lbs.  
**Water Capacity (unoccupied):** 105 gal. US  
**Water Capacity (occupied):** 70-90 gal. US

## Included Features:

1. Acrylic Tub Shell
  - High quality acrylic
  - Rustproof, stainless-steel frame
  - High Gloss Black Textured
  - Fiberglass & Gel-coat Layers Reinforcement
  - Adjustable leveling legs for easy install
2. Low threshold step in 6"
3. Aluminum Composite Door with Stainless Steel Hinges
4. Removable shelf for small medium sized pets
5. Two (2) removable side access panels
6. Two (2) dog chain hooks
7. Interior LED Light
8. Twenty (20) adjustable sidewall jets
9. Drain cover
10. Two (2) hand mixers
  - One (1) multi-functional, extended hand mixer
  - One (1) Microbubble Therapy hand mixer
11. Infusion Microbubble Therapy System
  - Micro Pump - 10AMP
  - Ozone Sterilization System - 1AMP



Removable Platform For Larger Sized Dogs

## Electrical:

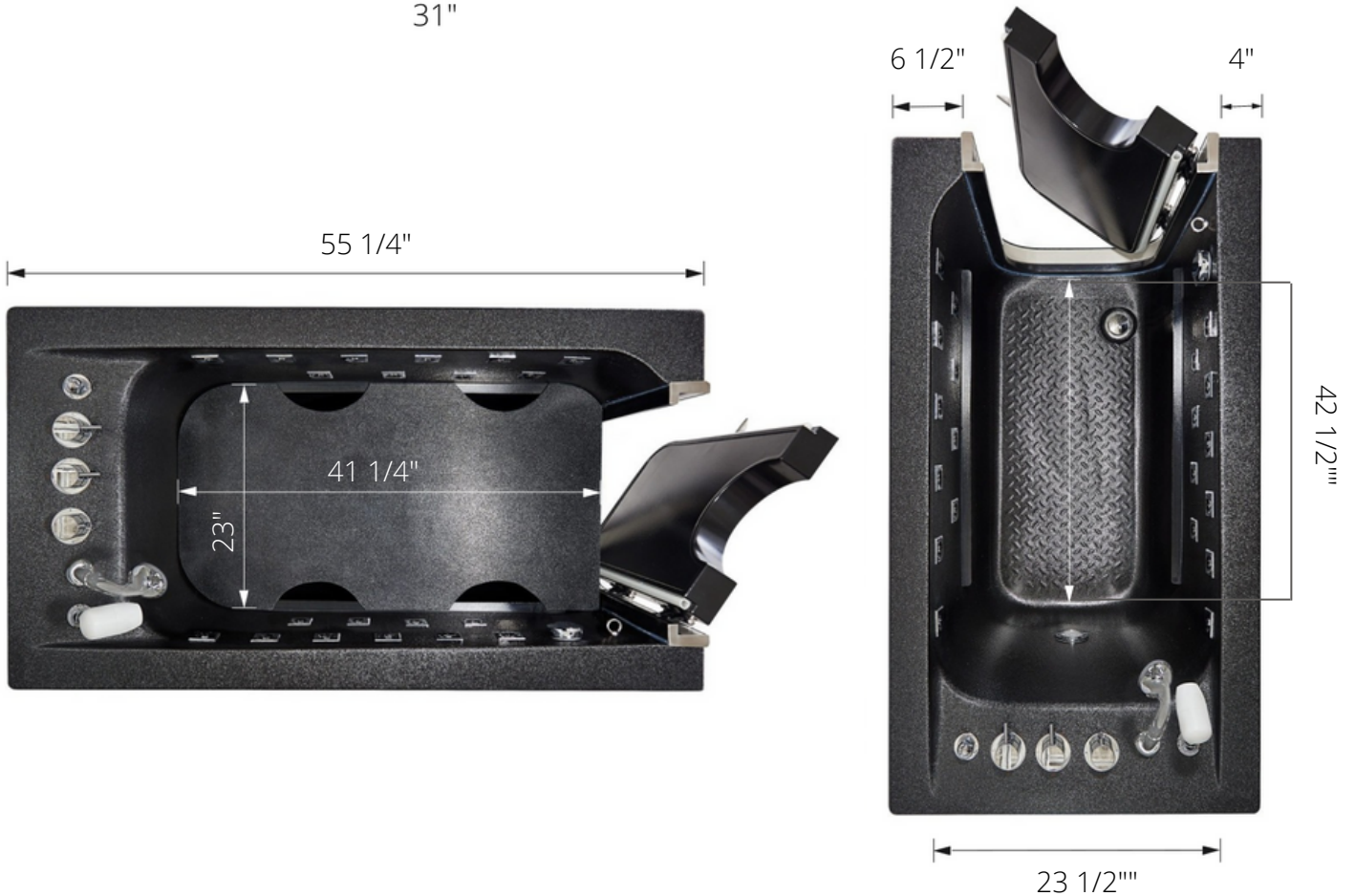
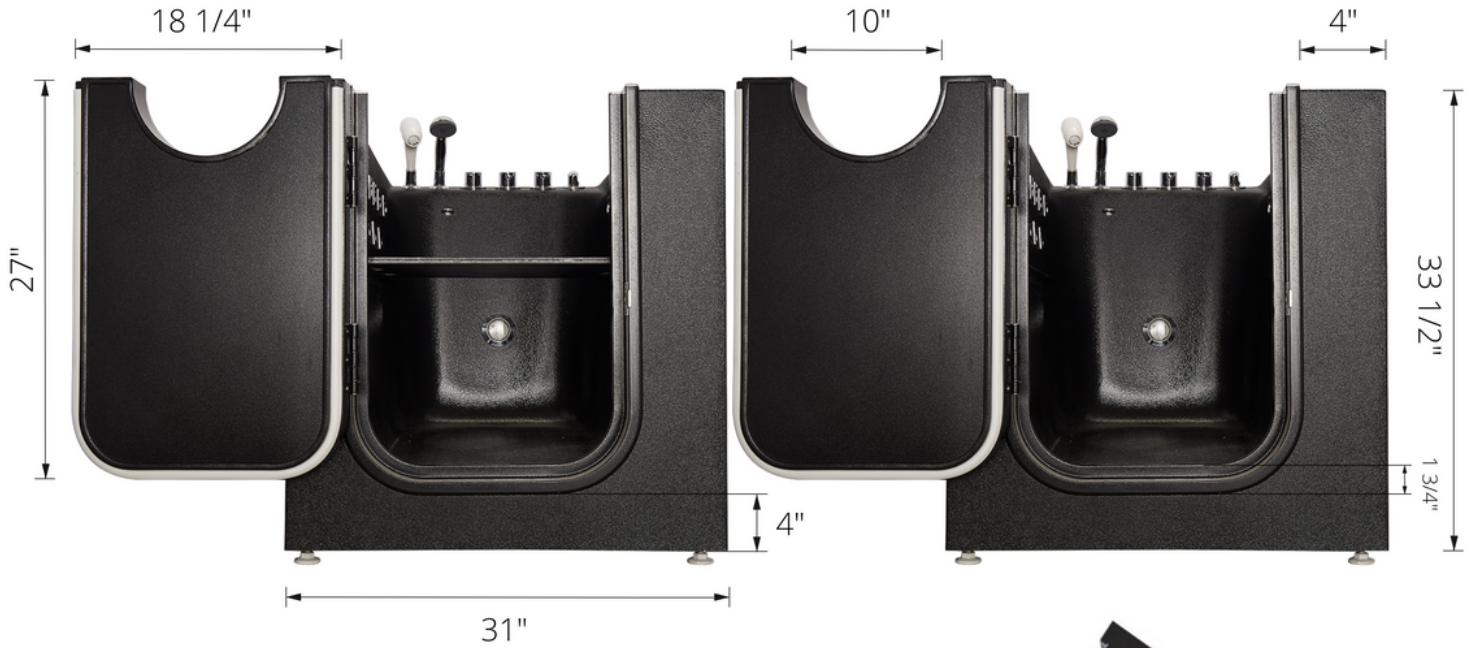
One (1) 120V GFCI 20AMP breaker/dedicated line to plug in a single connection.

## Warranty:

Lifetime limited warranty on frame, door, door seal gasket, and acrylic walk-in tub shell. 5 year parts warranty\*

## Plumbing:

- Two (2) 5' long stainless-steel braided water supply lines with 3/4" IPS connectors
- 2" PVC drain connected via PVC glue to 2" drain pipe or reducer to 1.5"



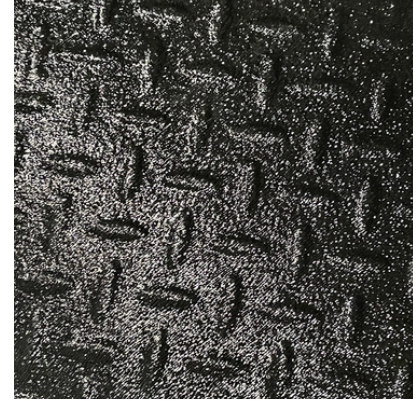




2" Single Drain



Two (2) Dog Chain Hooks



Textured Floor



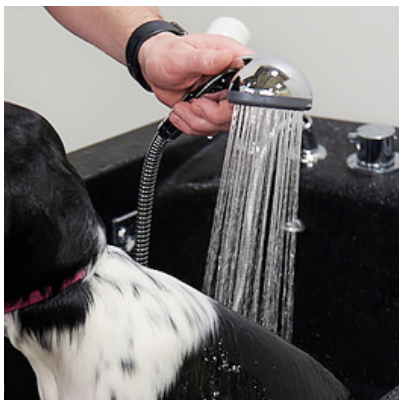
Removable Platform For Larger  
or Smaller Sized Dogs



Aluminum Door with  
Stainless Steel Hinges



Microbubble Hand Shower  
with Ozone Sterilization



Hand Shower with a  
Retractable Stainless Steel  
Hose



Twenty (20) Adjustable Sidewall  
Jets - Ten (10) Jets Per Side



Interior LED Light (Turns on  
with the Microbubble Hand  
Shower Only)